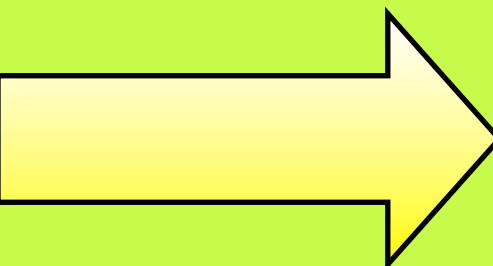


# Moving Pictures

**Today we will be...**

Finding out about objects that have moving mechanisms.



Lots of storybooks have moving parts to make the pages more exciting. Let's have a look at some...

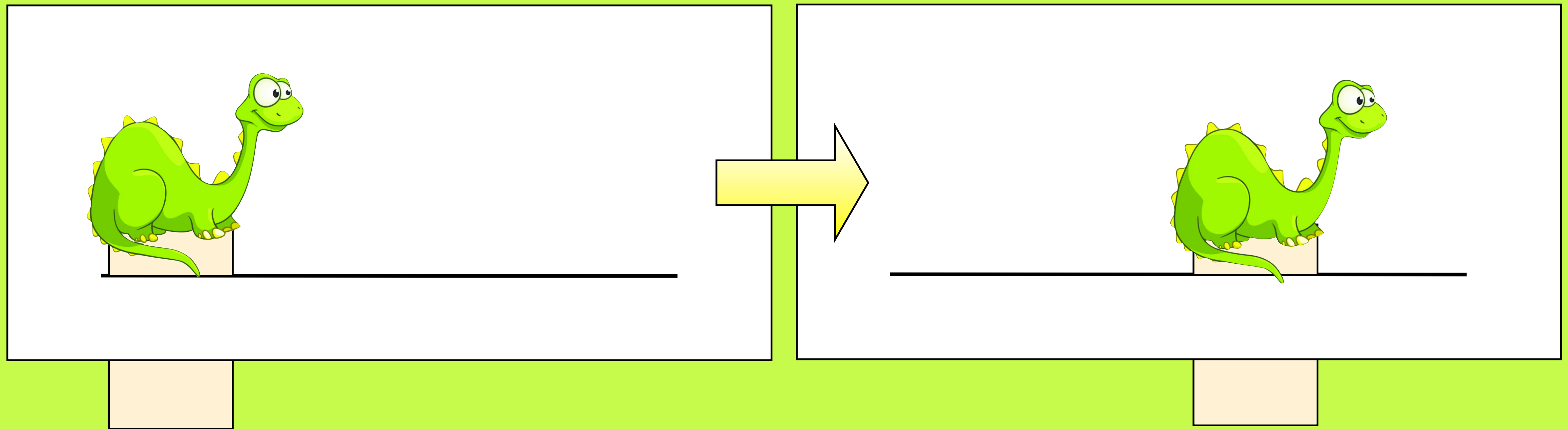


Which parts of the storybook move? How does it move?



How does the movement make the page more exciting to look at?

Over the next few lessons we will be looking at lots of different ways of creating **moving mechanisms** so that we can make our own moving pictures. Today we will be looking at how to make **sliders**.

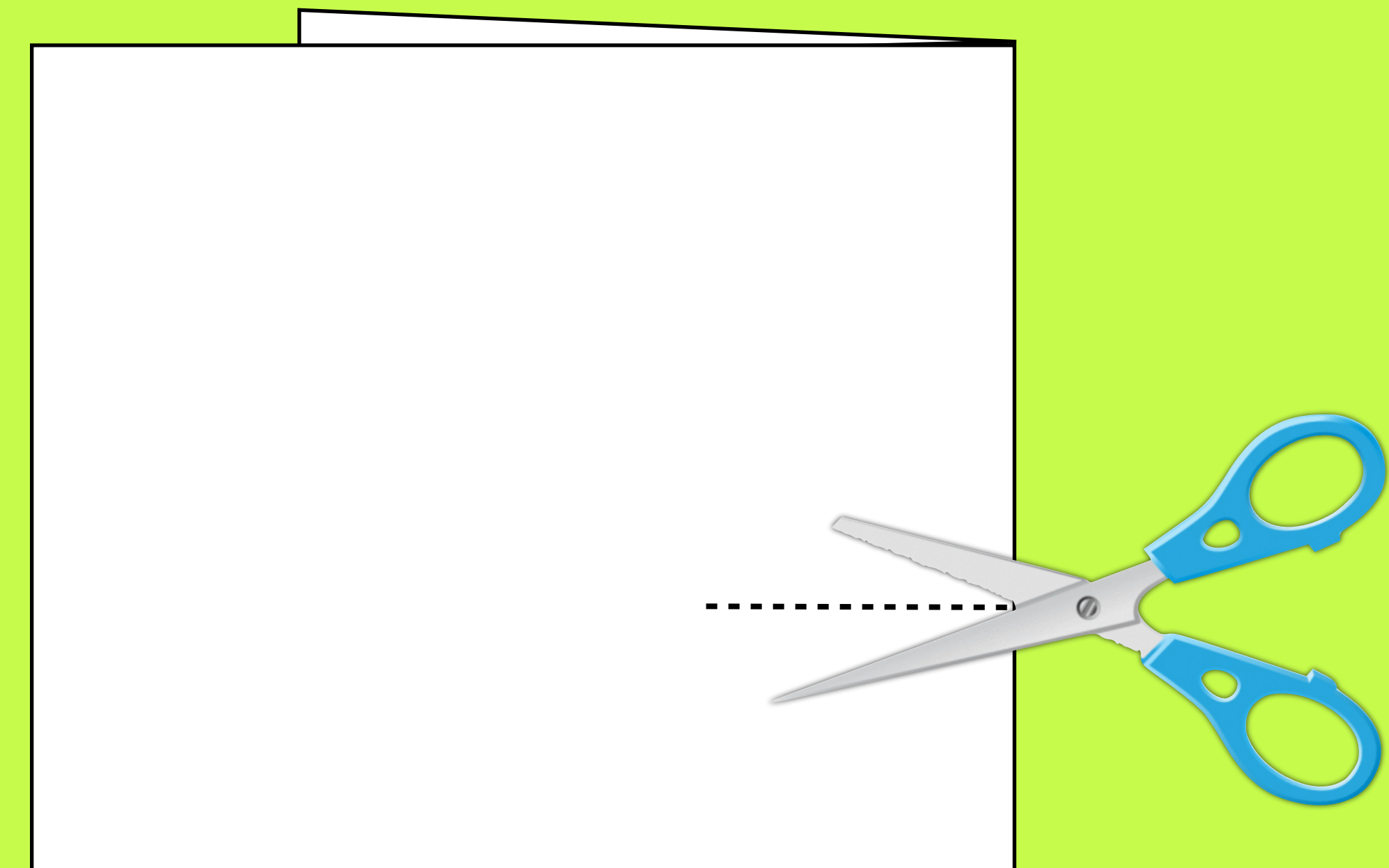


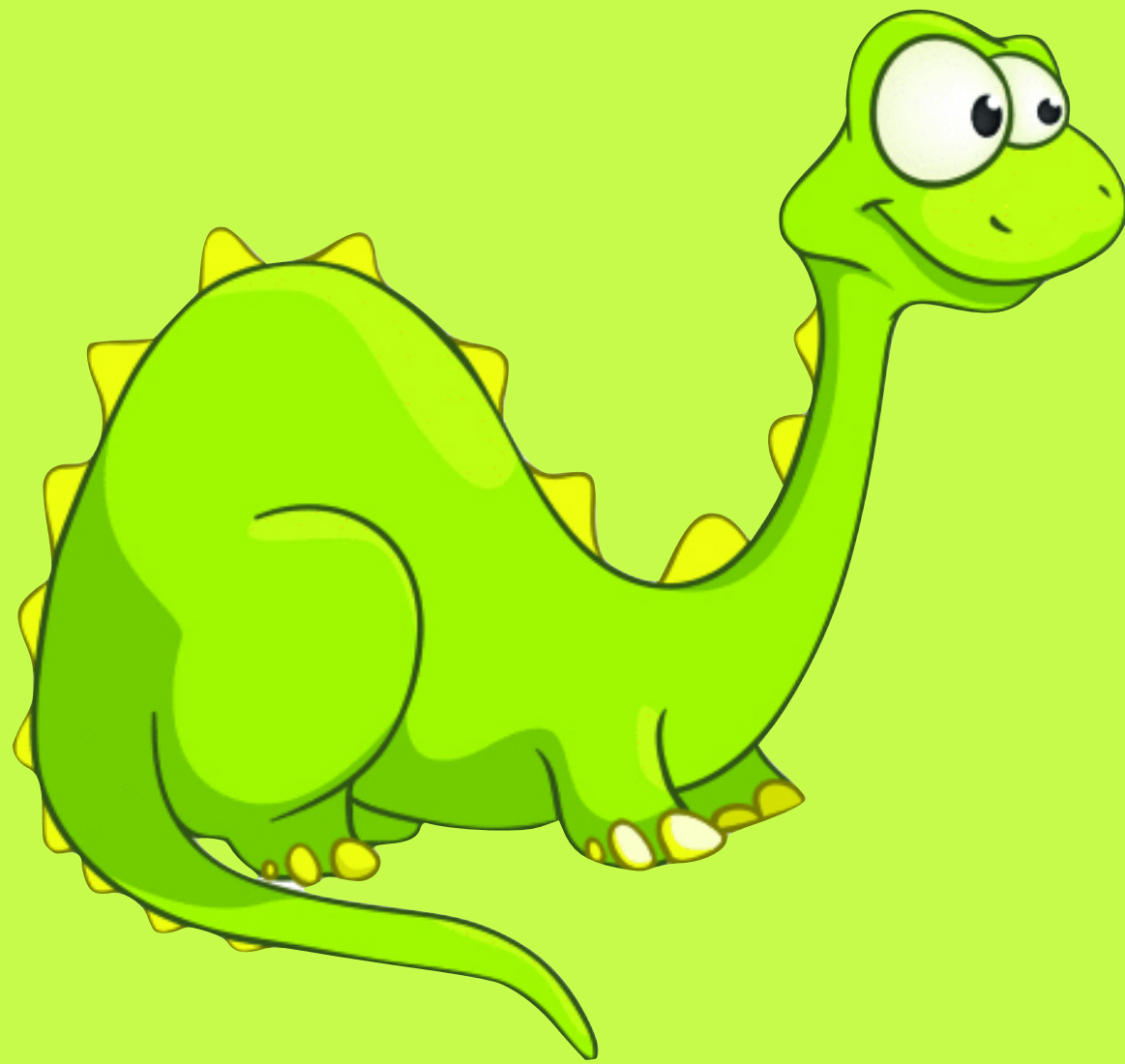
Have a look at these pictures. Can you explain how you think sliders work?

The first thing you need to do when making a slider is to cut a slit into a piece of card.



An easy way to do this is by folding the piece of card in half, drawing a line where you want the slit to be and then cutting across the fold.

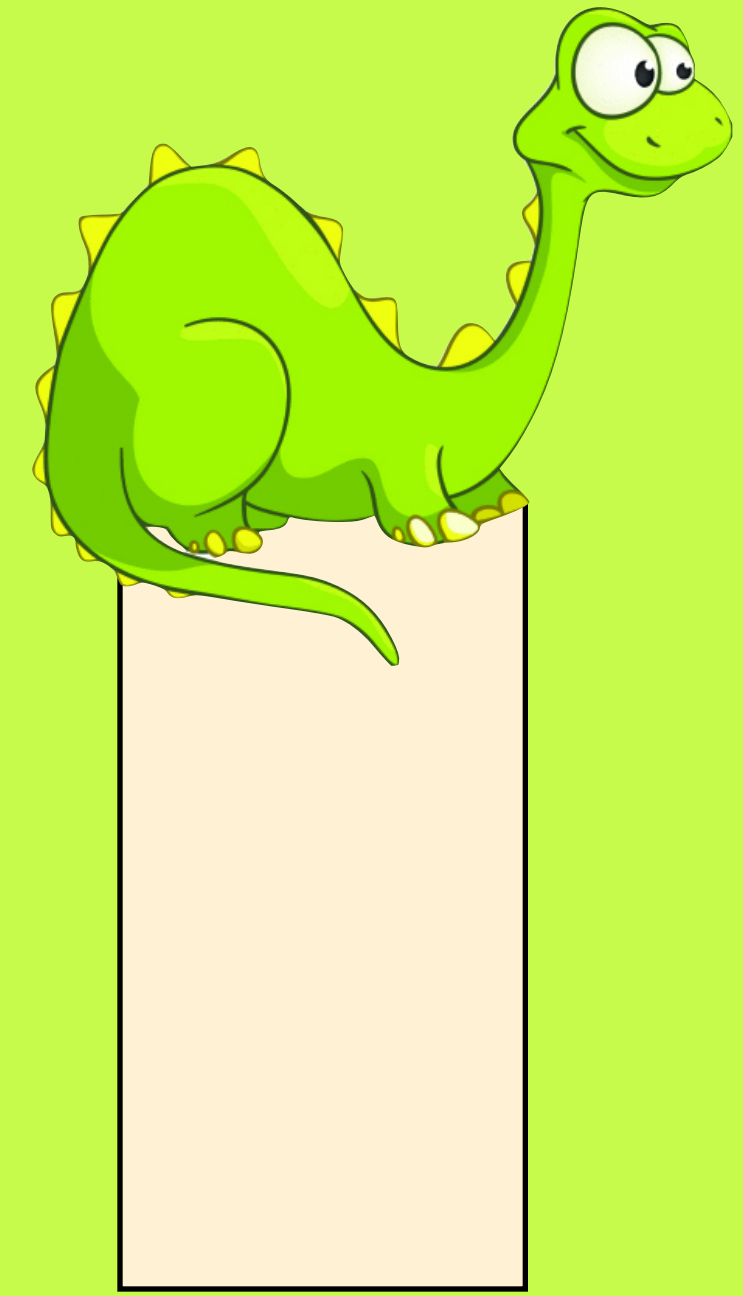




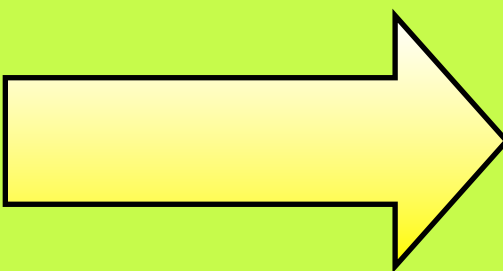
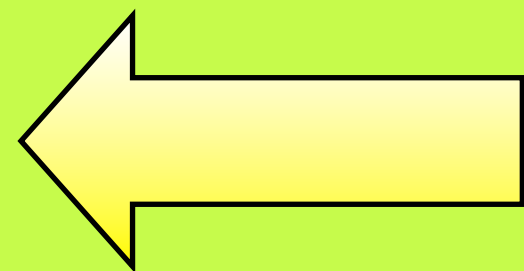
You then need to cut out the object you want to move in your picture, like this dinosaur.

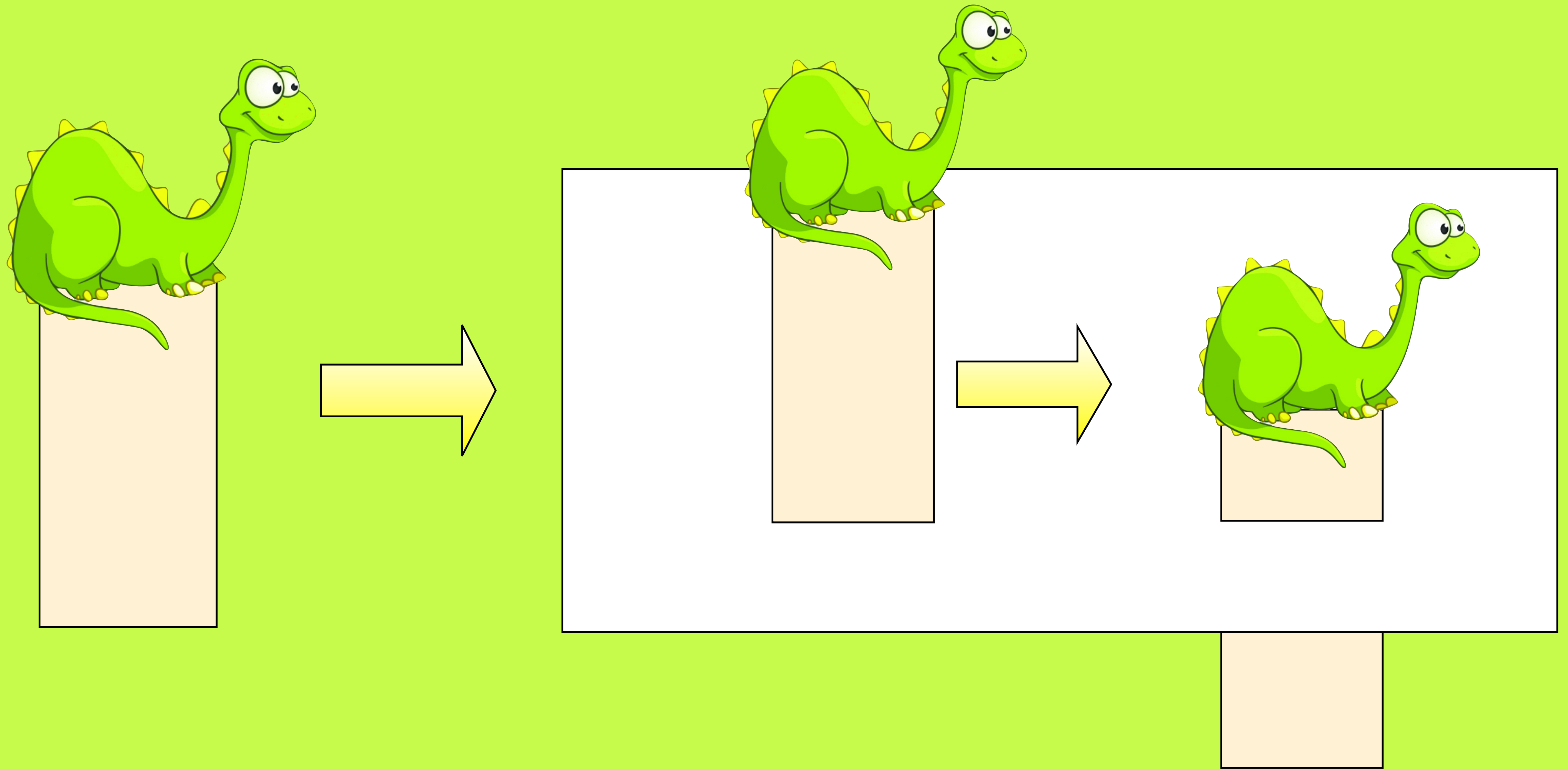


You also need a **handle** made out of strip of card.

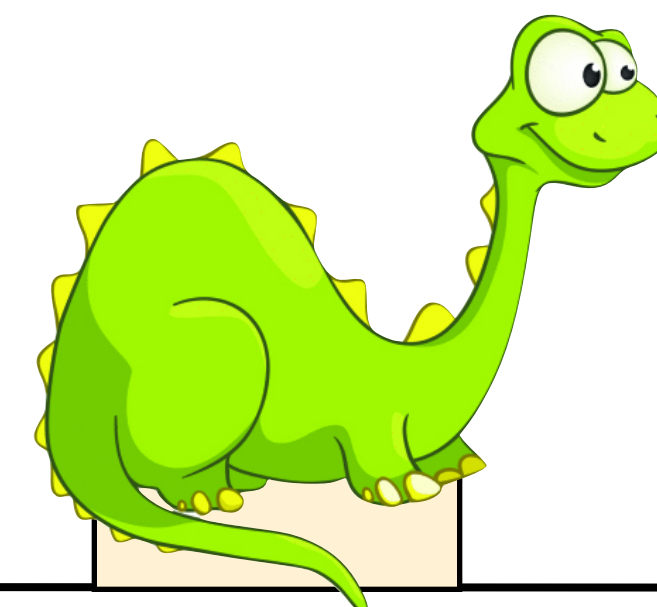
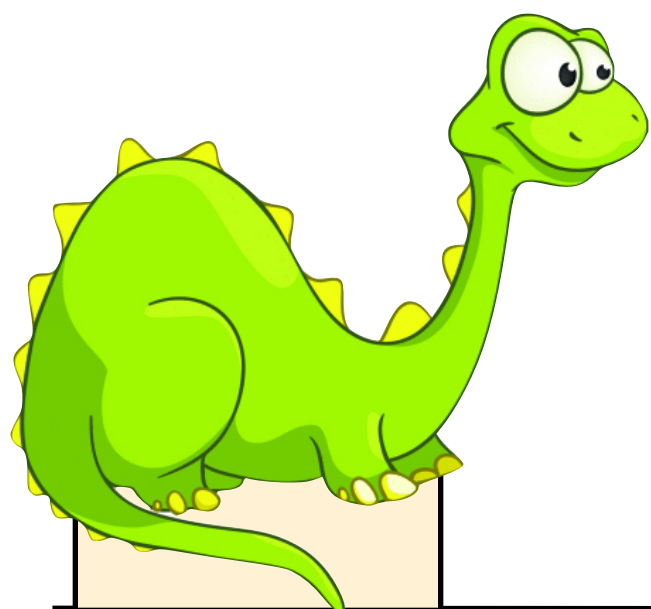


You then need to **join** these two together by sticking the handle to the dinosaur.

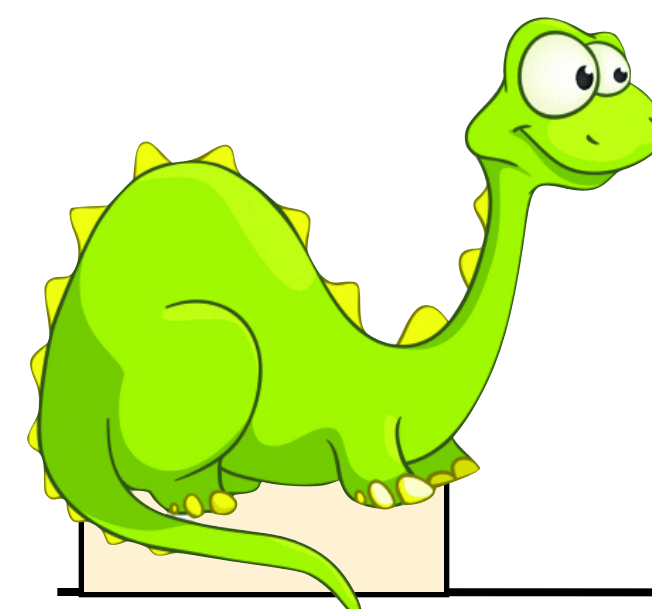


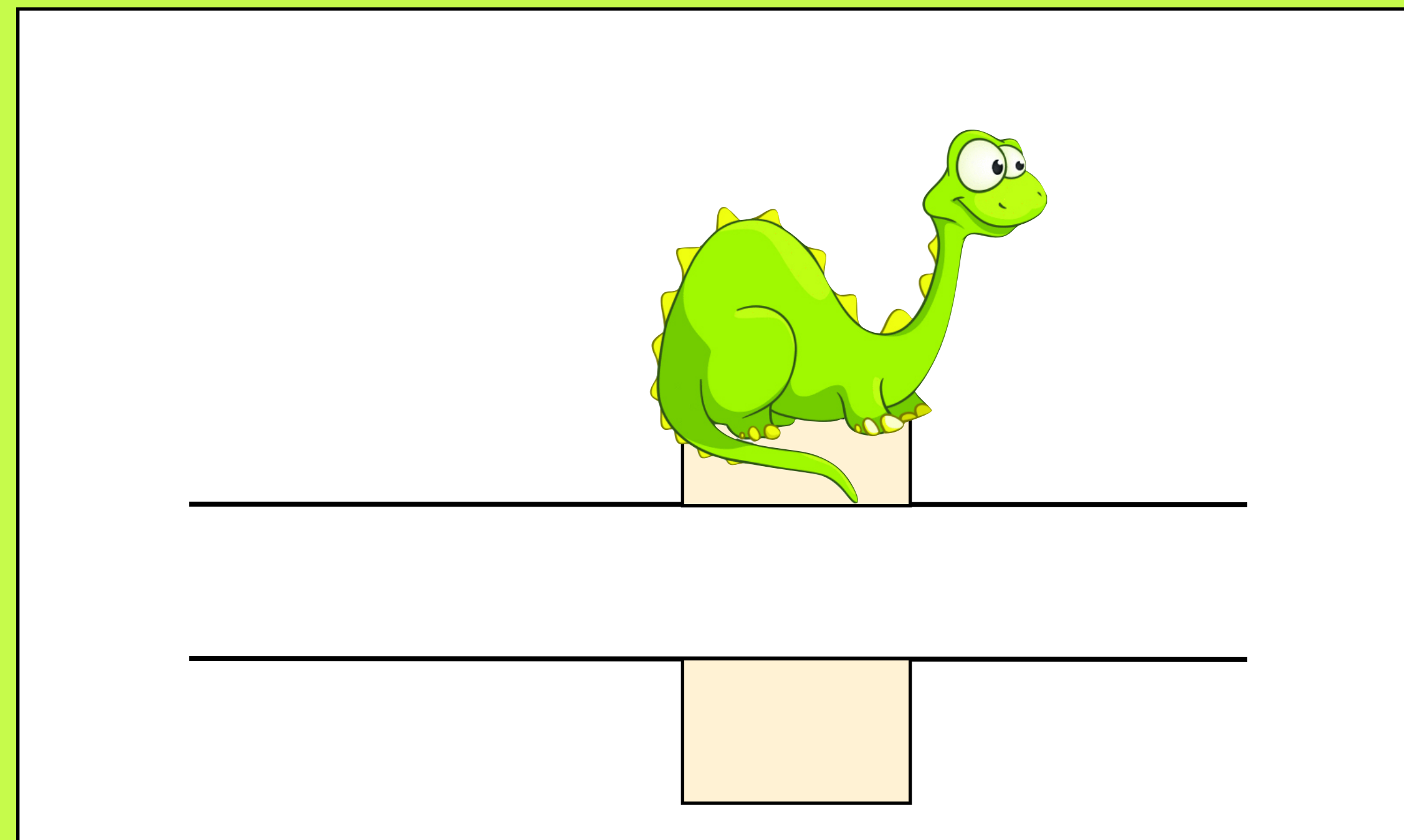
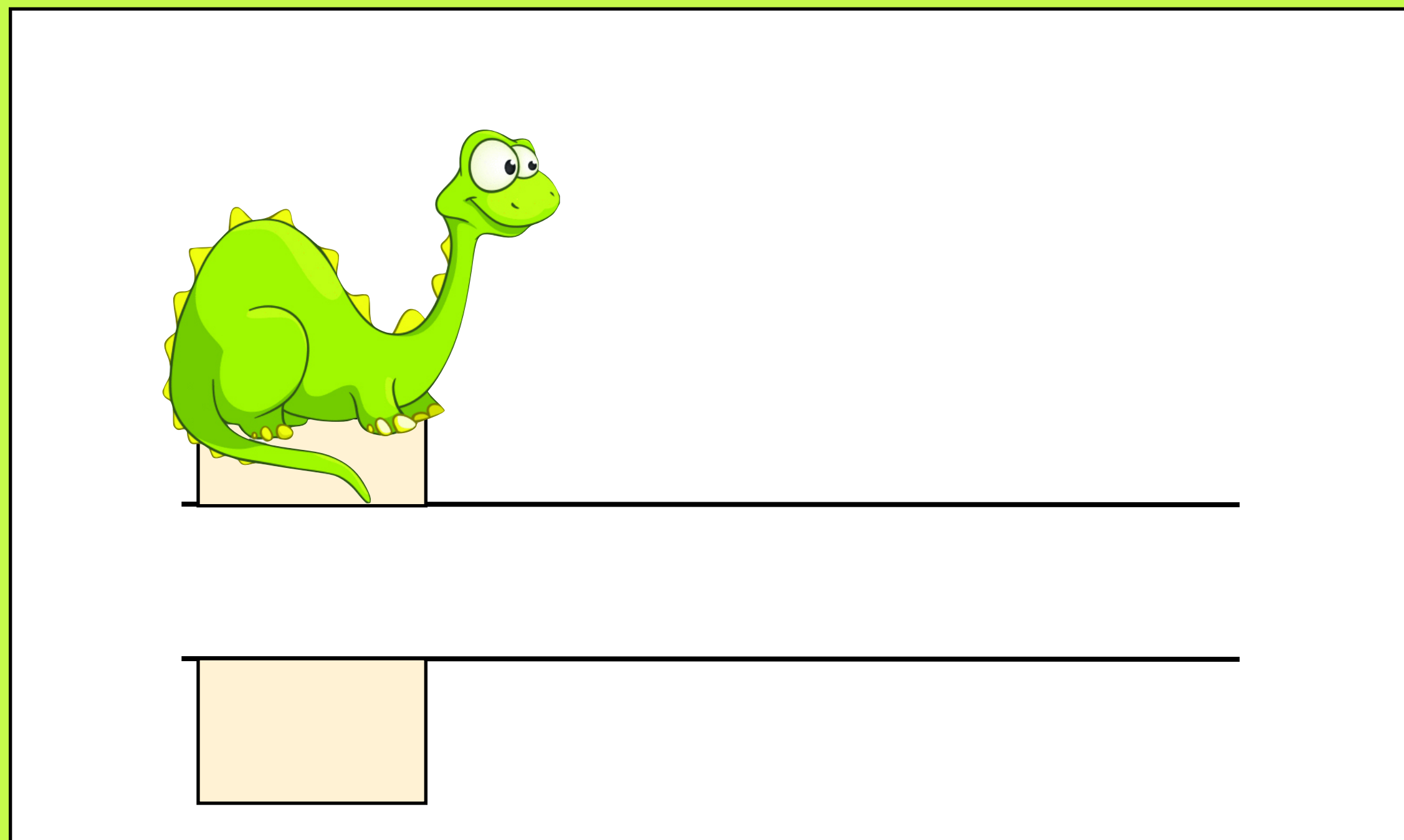


You then need to slide the handle into the slit and pull it down.

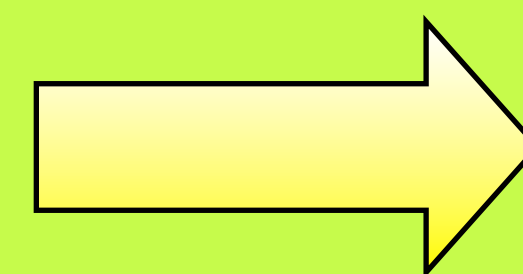
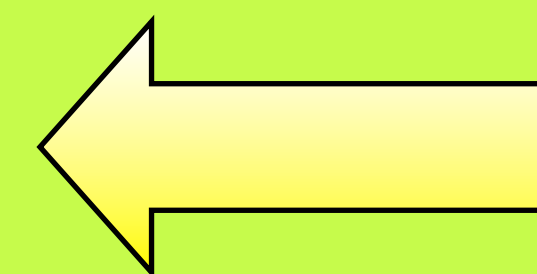


You can then use the handle to move the dinosaur along the slit. If you have just one slit, you will need to fold the handle back so that the dinosaur does not fall out.

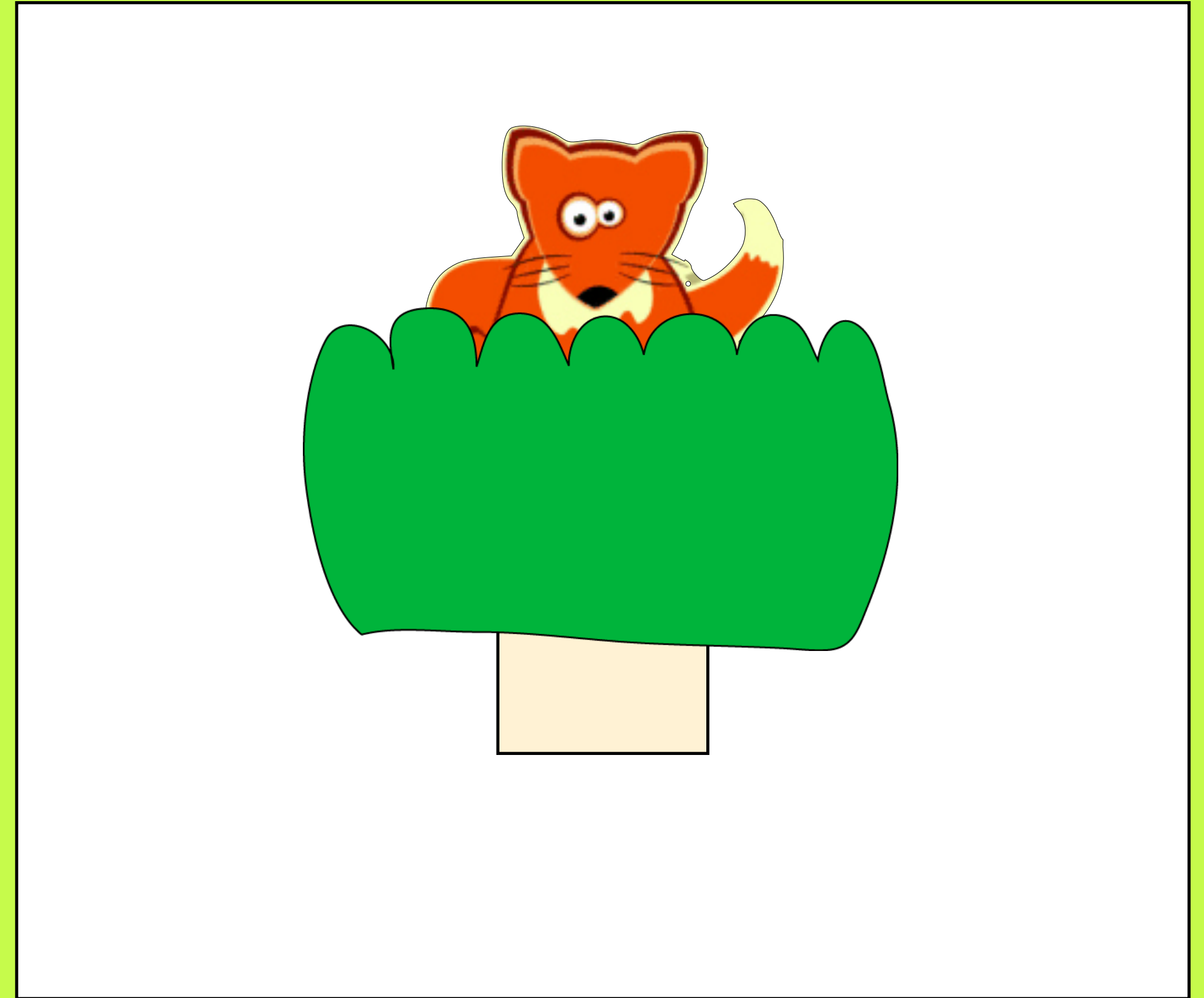
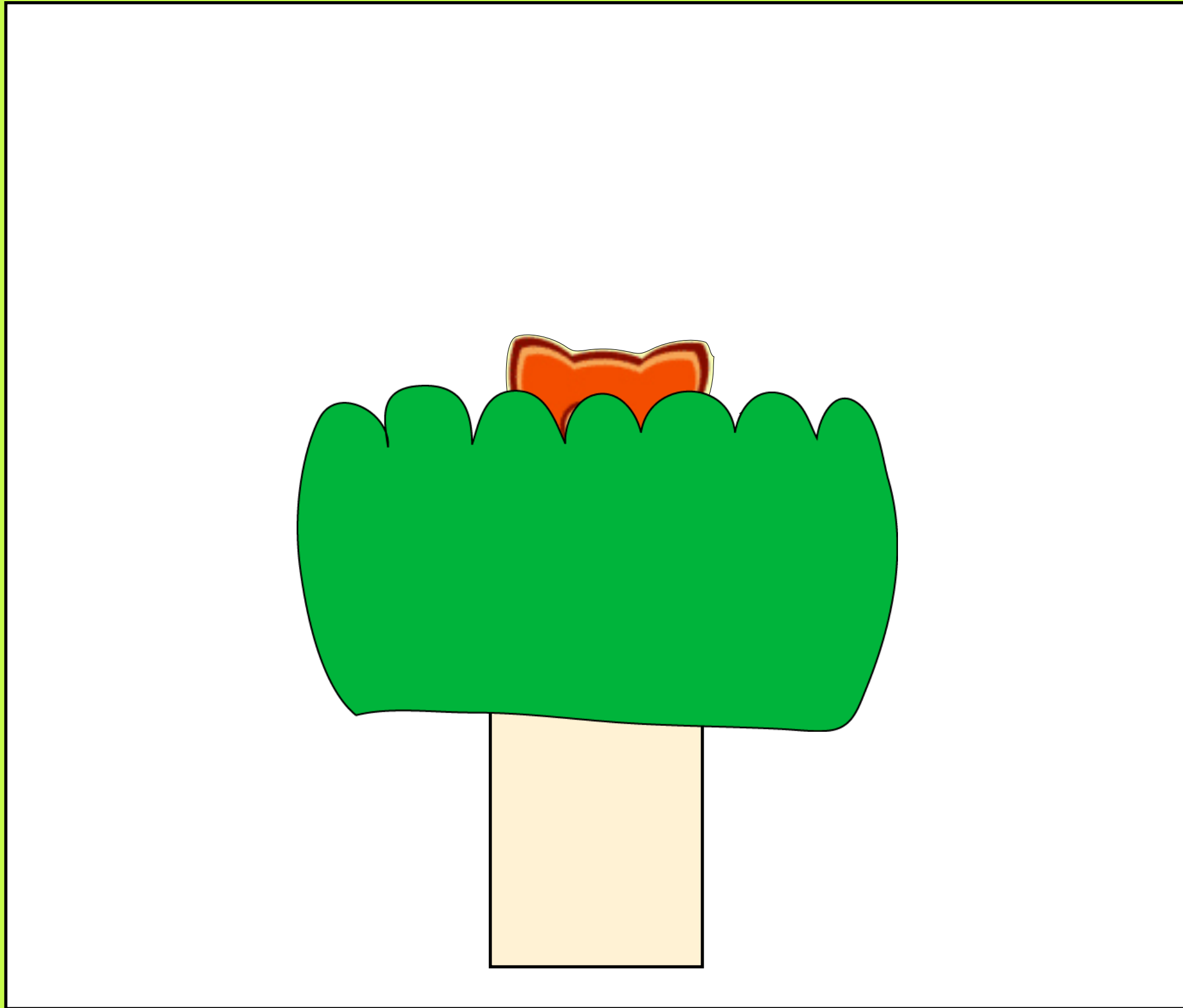




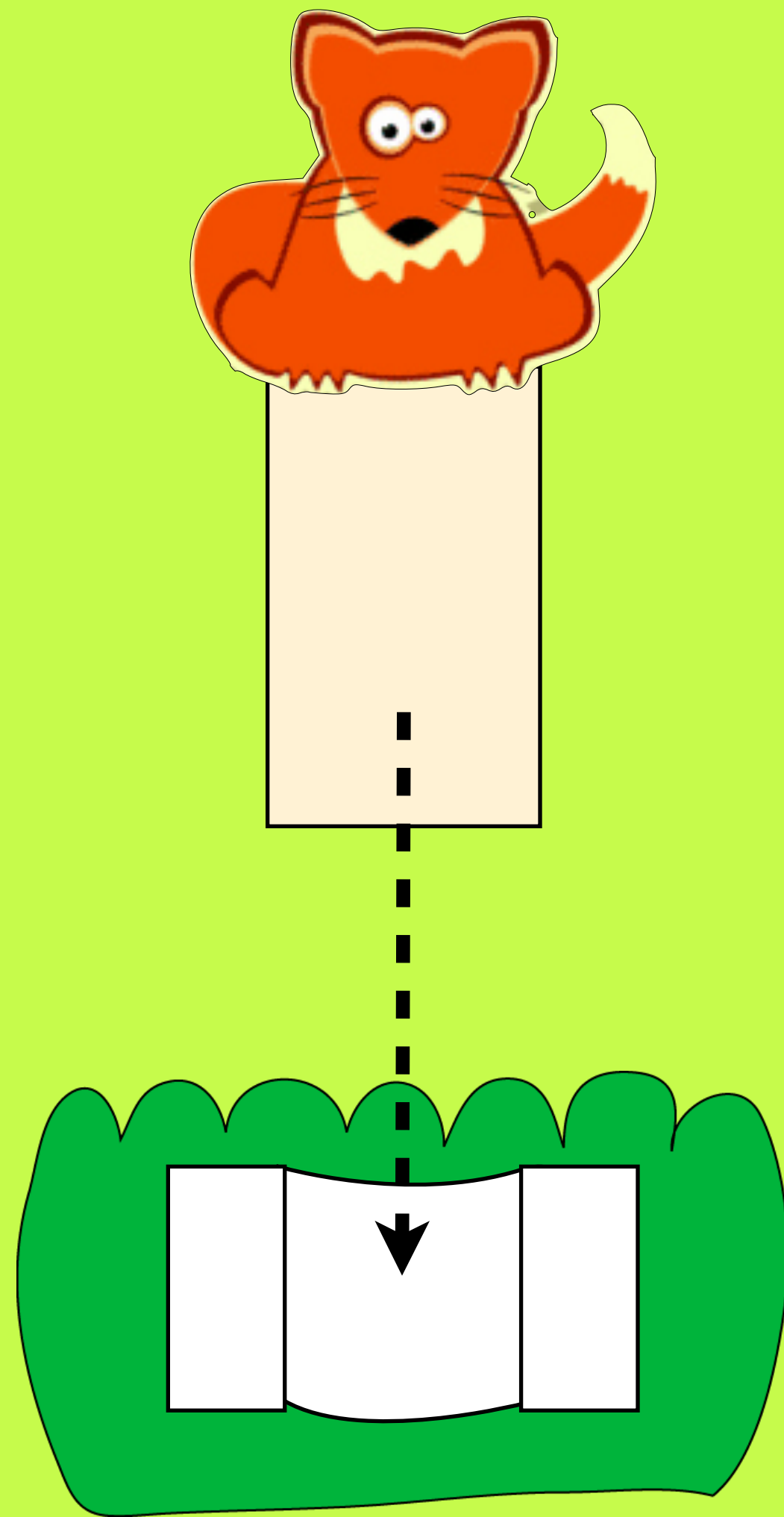
If you don't want to have your handle at the back, you can make two slits and pull the handle through both of them.



You can also use sliders to make objects disappear and reappear.

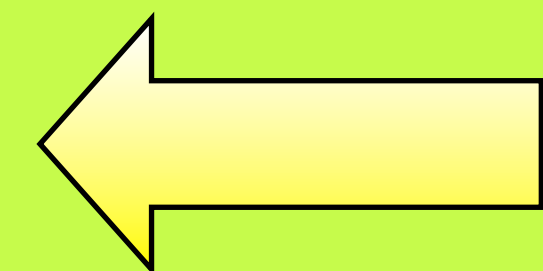


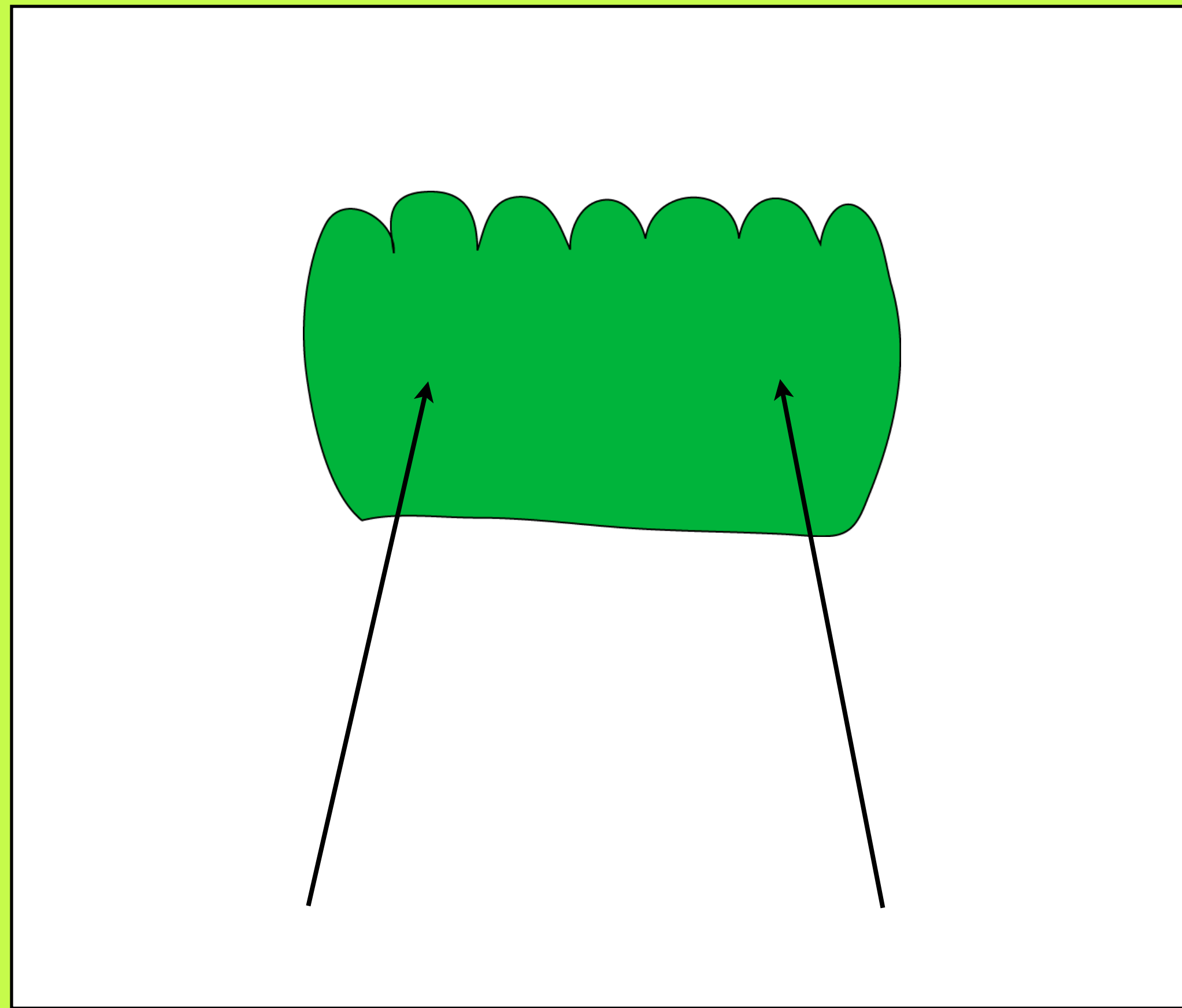
Can you explain how this fox is appearing out of this bush?



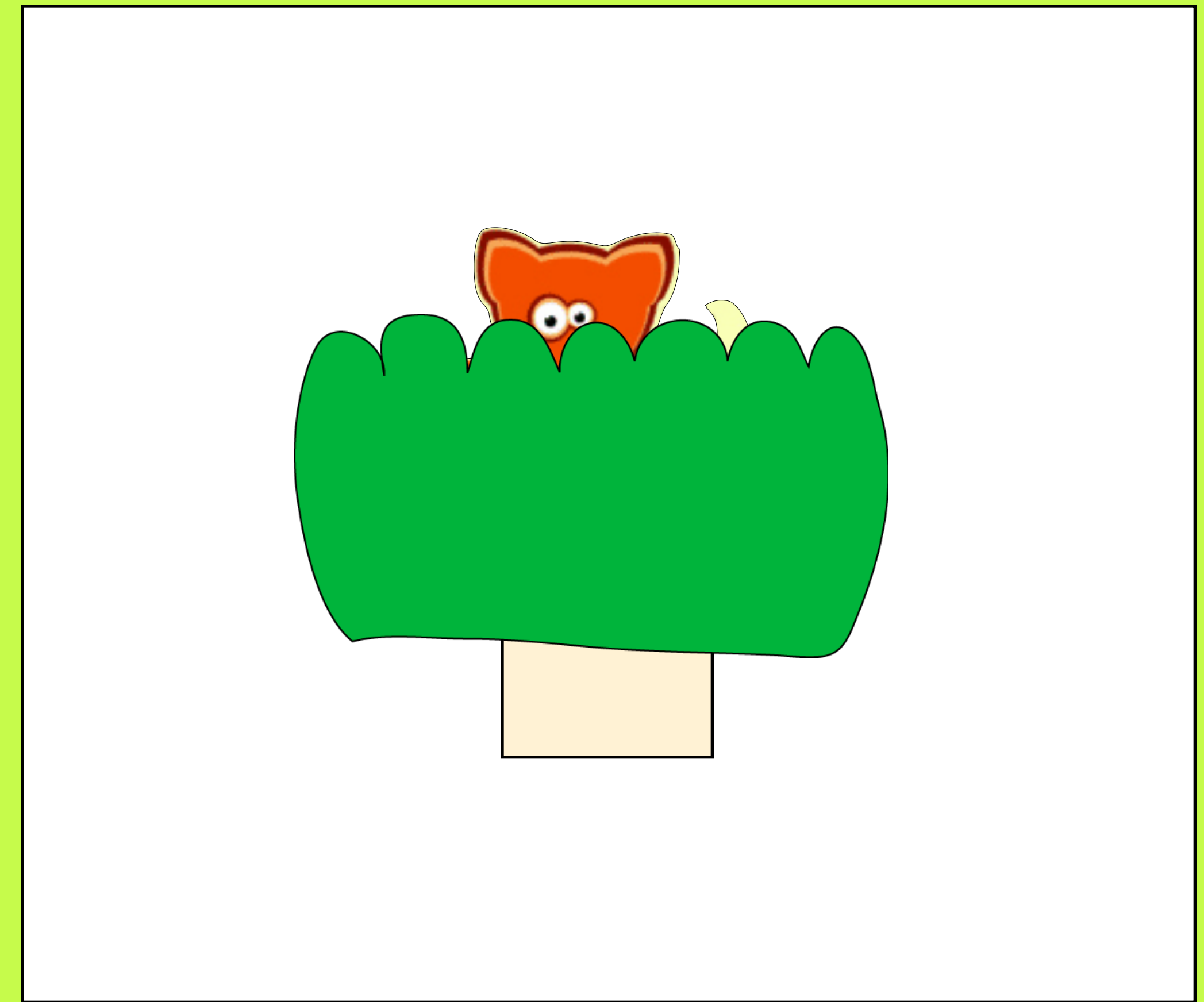
The fox is attached to a handle, just like the dinosaur was.

A tab is stuck onto the back of the bush so that the handle can go in and out.



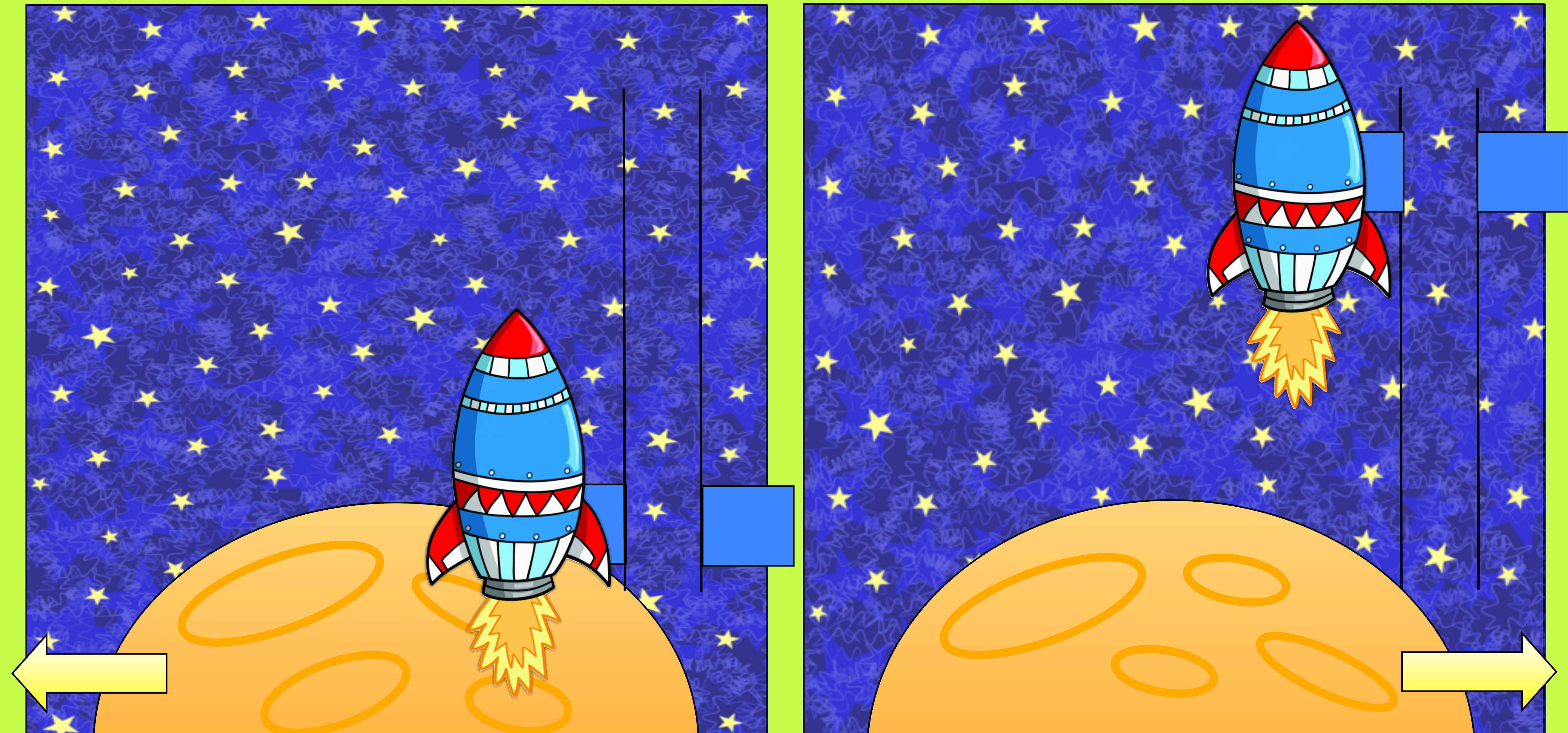


Both edges of the bush are stuck to the card.

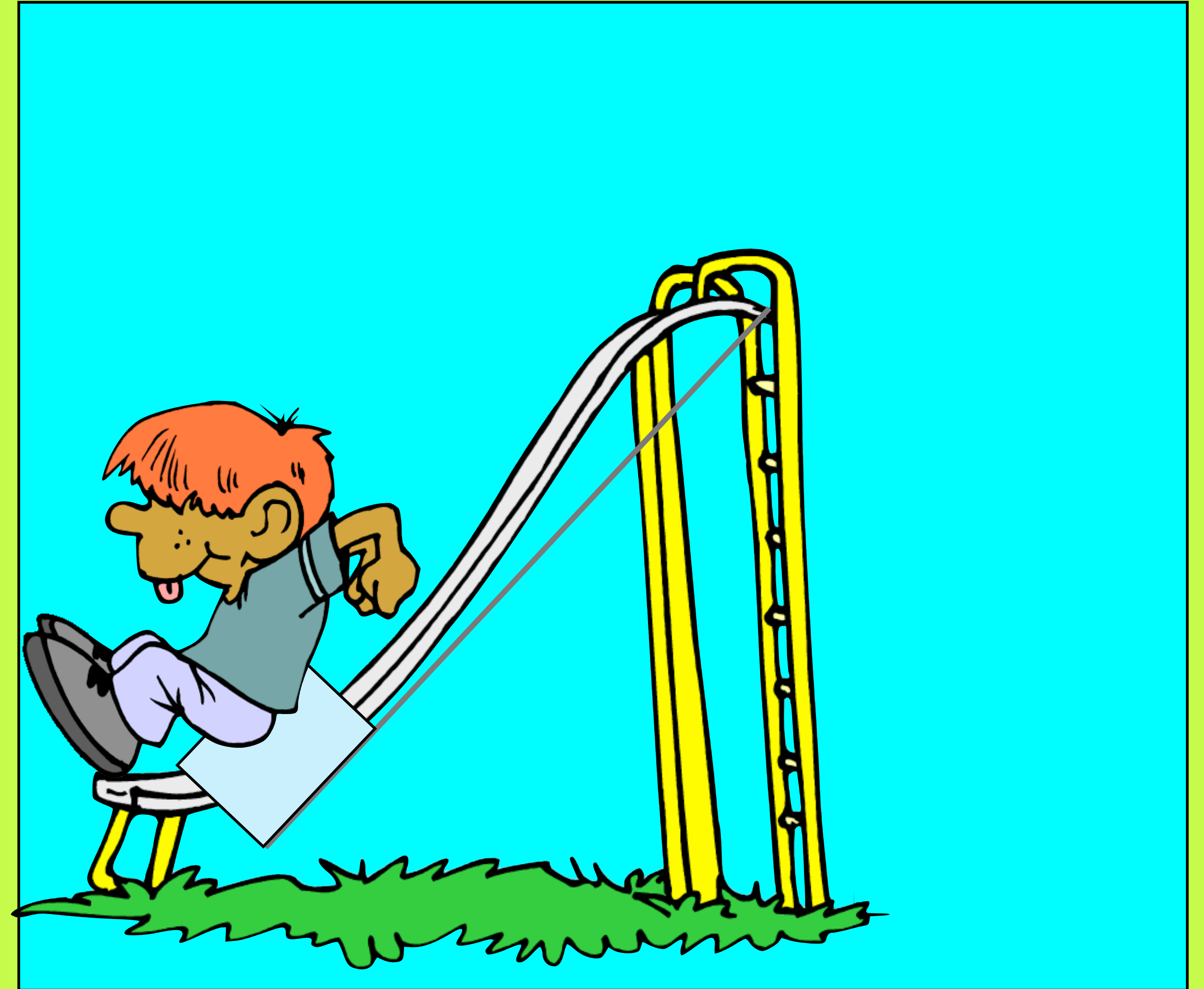
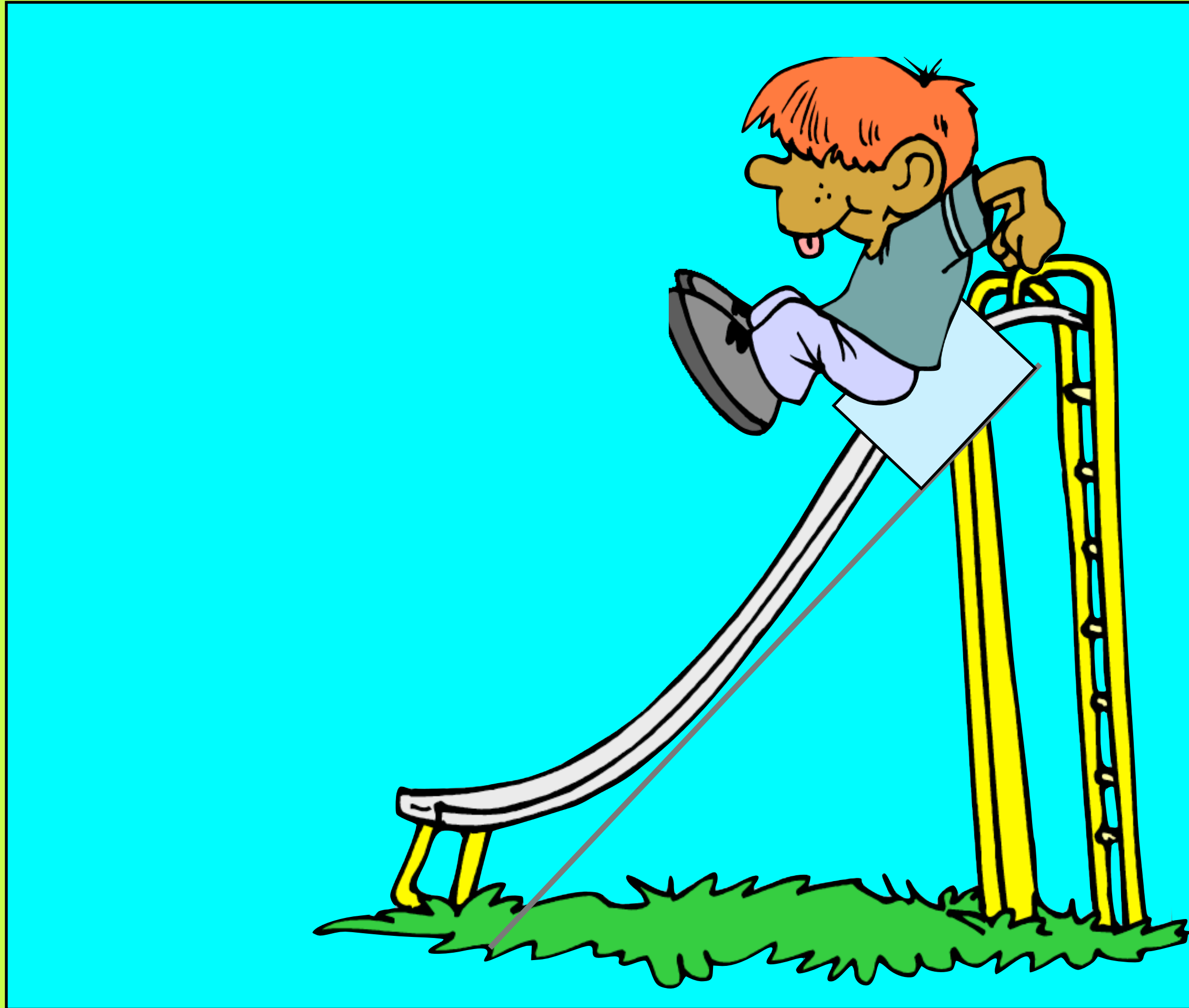


The handle with the fox on can now slide into the tab on the back of the bush so the fox and move up and down.

Have a look at this slider picture. Can you explain how it works?



Have a look at this slider picture. Can you explain how it works?



Have a look at this slider picture. Can you explain how it works?

